

Self-Directed Supports Network

A network of individuals and family members using self-directed supports in Rhode Island

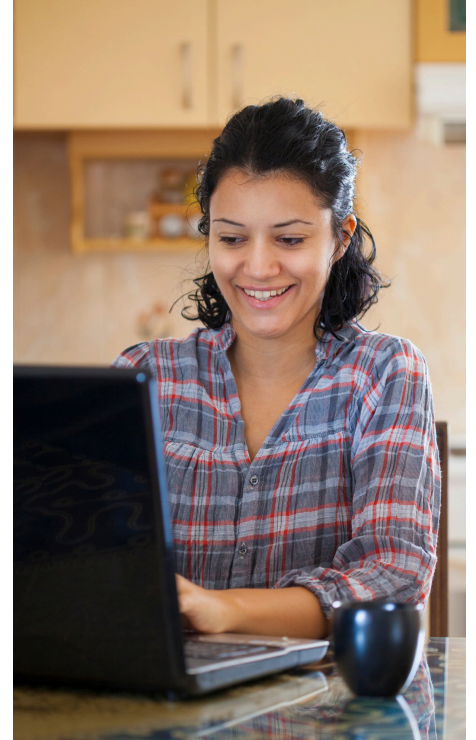
Online meeting

7 – 8:30 p.m.

Wednesday, Aug. 20, 2025

In this meeting, representatives from four fiscal Intermediary (FI) agencies will share updates on changes to documentation, payroll, Electronic Visit Verification (EVV) and other related topics. Each agency handles these things a little differently, so hearing from four of them will help everyone better understand what is expected. Joining us will be:

- Rachel Morgan from Perspectives
- Anita Fleckensein of ReFocus
- Linda Vollaro from Options
- Sharon Johnson and Natasha Walker from proPartnerships



*Invite your
Direct Support
Professionals
to join!*

This meeting will take place online using Zoom. When you register, you will receive an email with the directions and a password to join the meeting. You can connect by computer, mobile device or listen using your telephone. You may be prompted to download an app depending on the device you plan to use. This session will be recorded.

The Self-Directed Supports Network is a resource for individuals and families using self-directed supports through the Division of Developmental Disabilities. Meetings provide an opportunity to share experiences and learn from others.

Register online: <https://bit.ly/41UeGqJ>

Agenda

- 7 - 7:05: Welcome, updates and introductions
- 7:05 - 8:25: Presentations and questions
- 8:25 - 8:30: Closing remarks

If you need a reasonable accommodation (e.g., ASL interpreter, large print) or information in a language other than English, please make your needs known when you register.