

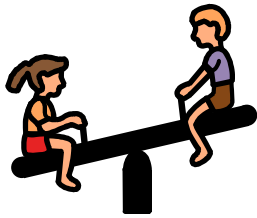
**YOUNG
CAM JANSEN**
and the
Baseball Mystery



by David A. Adler
illustrated by Susanna Natti

PUFFIN BOOKS

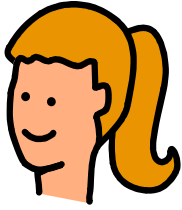
Chapter 1



Play



Ball



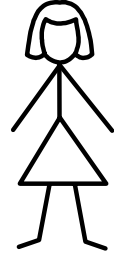
Cam

Jansen

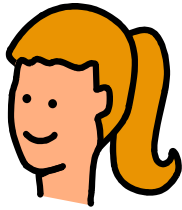


is

a



girl .

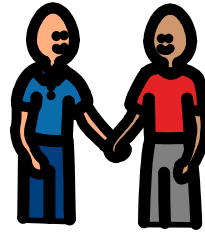


Cam

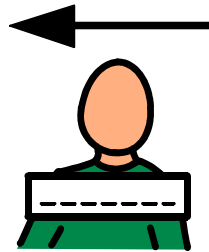


has

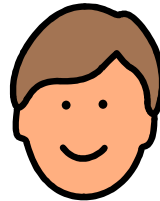
a



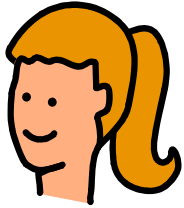
friend



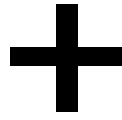
named



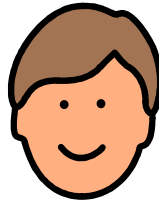
Eric.



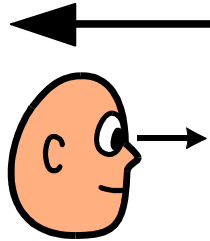
Cam



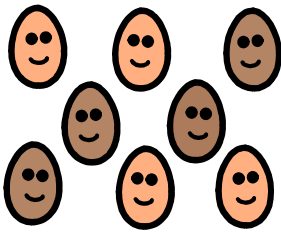
and



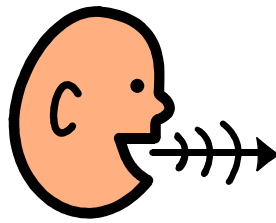
Eric



saw



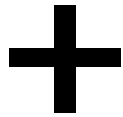
people



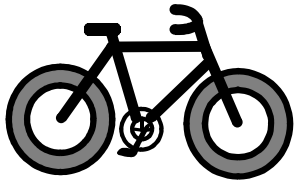
talking,



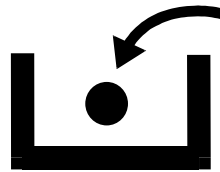
reading,



and



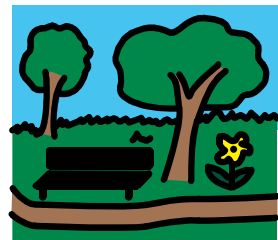
biking



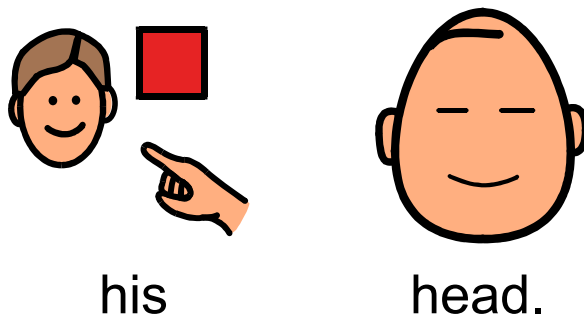
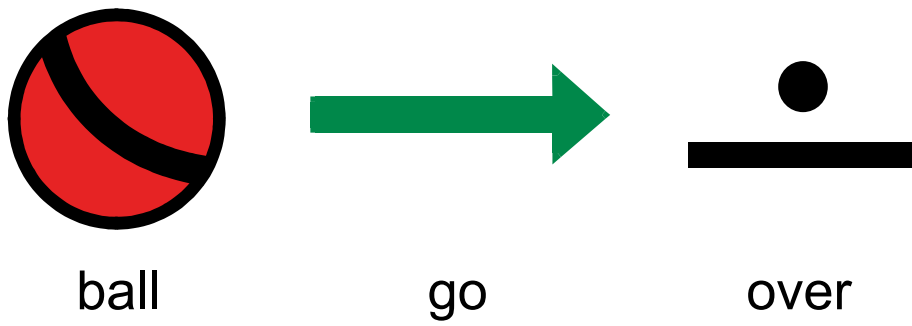
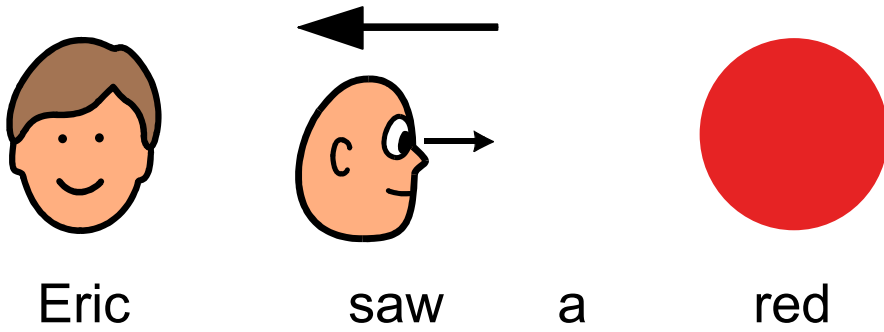
in

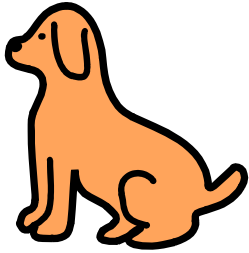


the



park



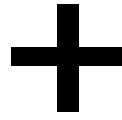


A

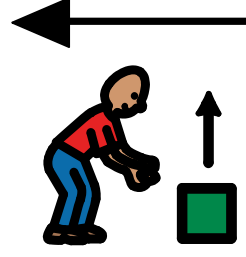
dog



ran



and



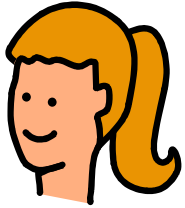
picked up



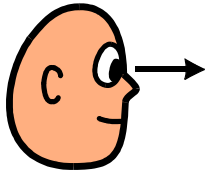
the



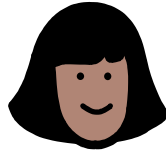
ball.



Cam



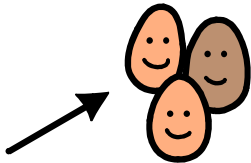
saw



her



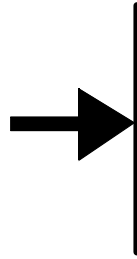
friends.



They

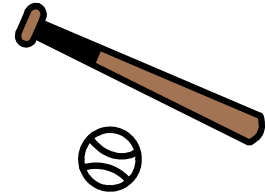


walked

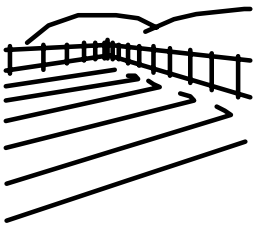


to

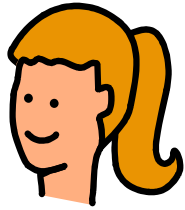
the



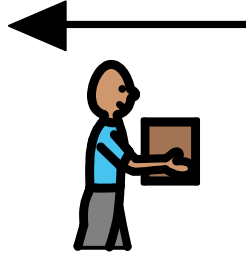
baseball



field .

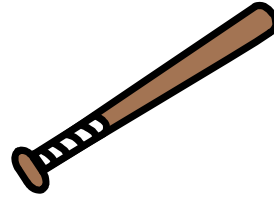


Cam

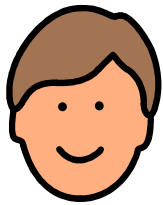


brought

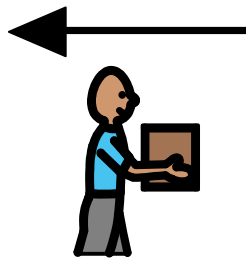
a



bat.

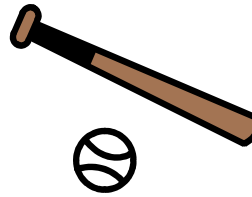


Eric

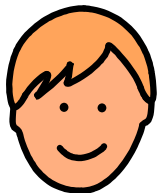


brought

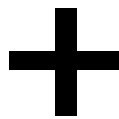
a



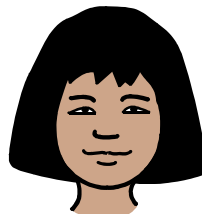
baseball .



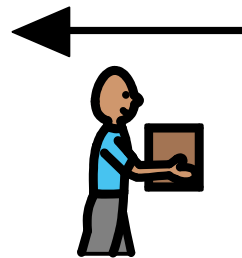
Robert



and



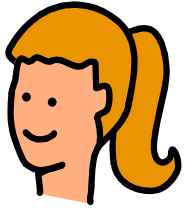
Rachel



brought



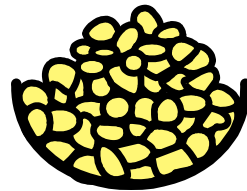
mitts.



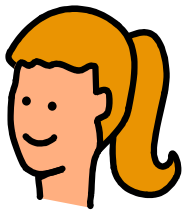
Cam



remembers a



lot.



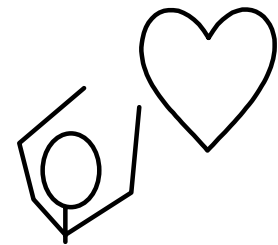
Cam



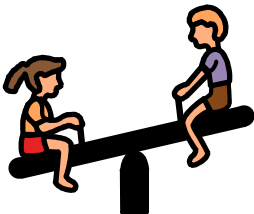
remembers



who

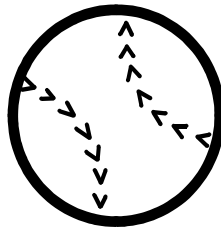


wants



to

play

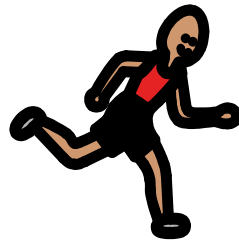


baseball.

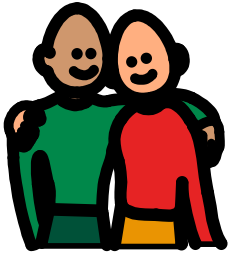
Chapter 2



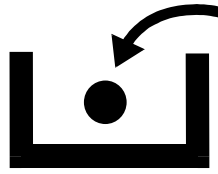
Home



Run



$4 \div 2 =$



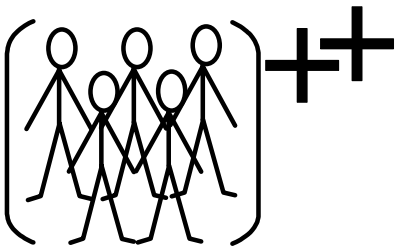
The

friends

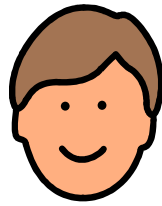
divided

into

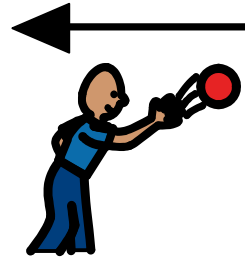
2



teams.

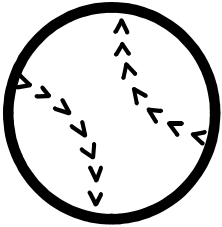


Eric

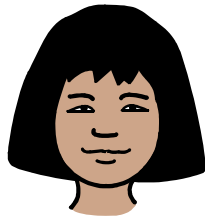


threw

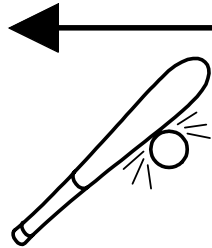
the



baseball.

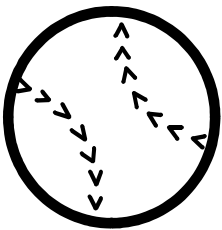


Rachel

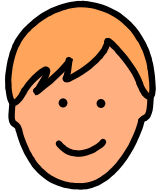


hit

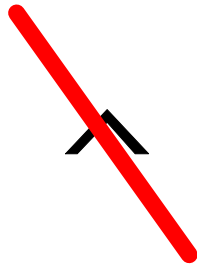
the



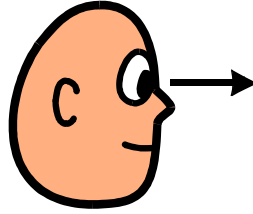
baseball.



Robert

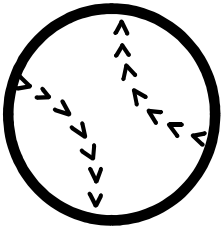


cannot



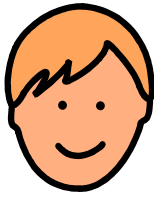
see

the

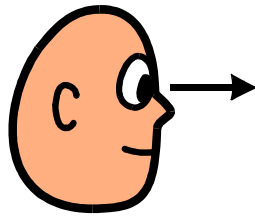


baseball.

Chapter 3

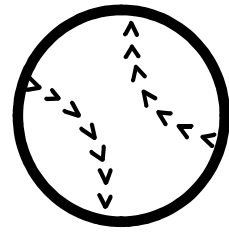


Robert

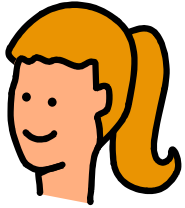


sees

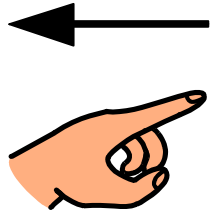
the



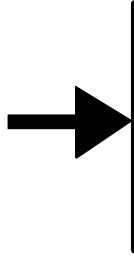
baseball



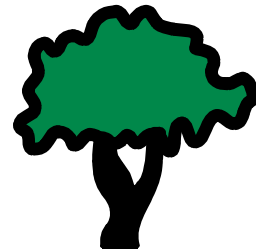
Cam



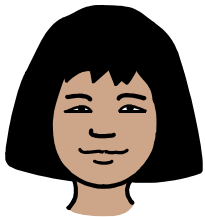
pointed



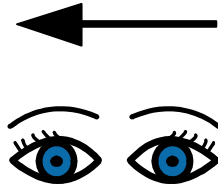
to the



tree .



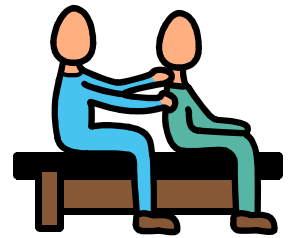
Rachel



looked

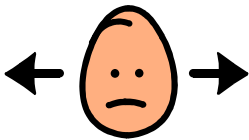


under

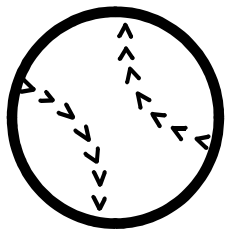


the

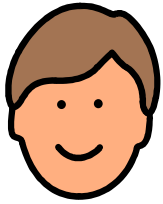
bench.



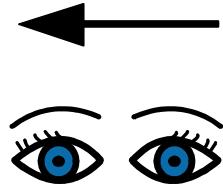
No



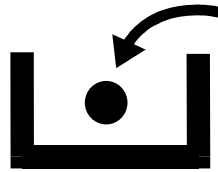
baseball.



Eric

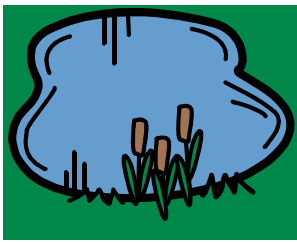


looked



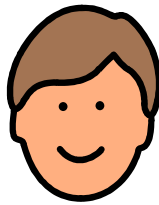
in

a

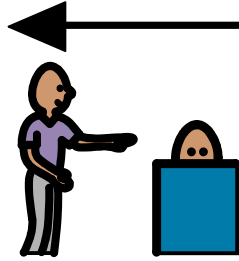


puddle

.



Eric



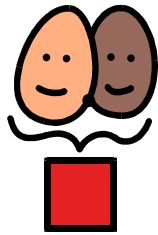
found

a

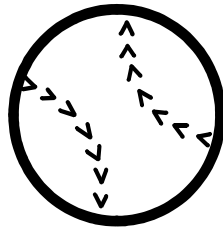


soda can.

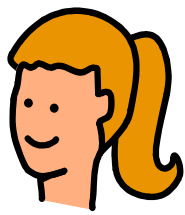
Chapter 4



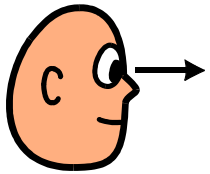
Our



Baseball



Cam

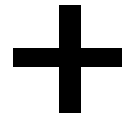


saw

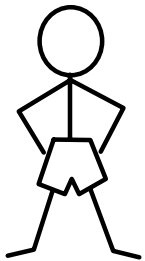


a

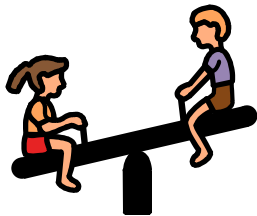
girl



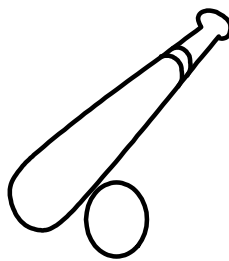
and



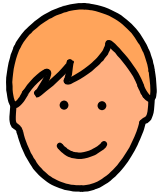
boy



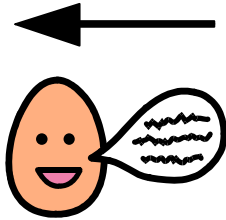
playing



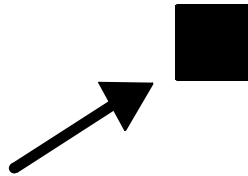
baseball.



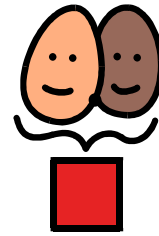
Robert



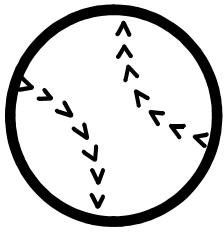
said



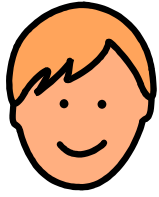
"That's



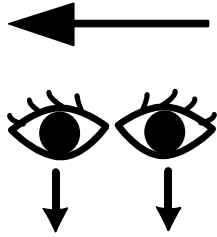
our



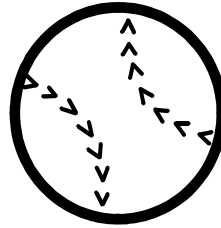
baseball!"



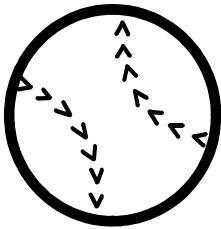
Robert



looked at the

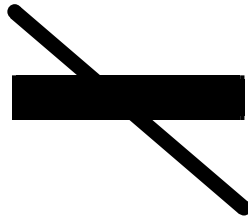


baseball.

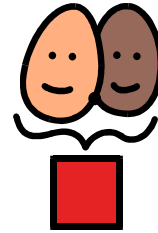


The

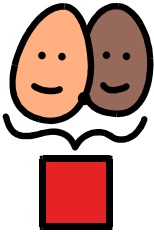
baseball



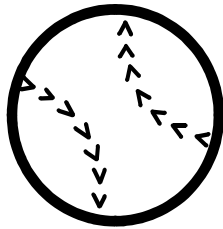
is not



ours.



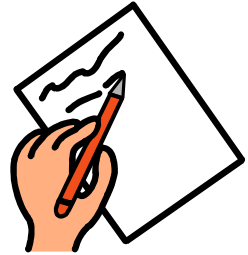
Our



baseball



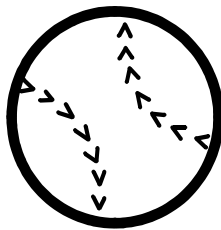
has



writing

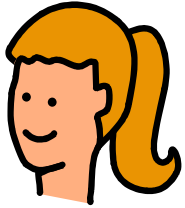


on

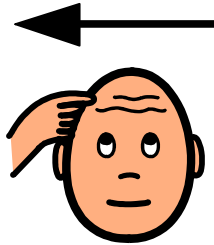


the

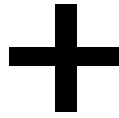
baseball.



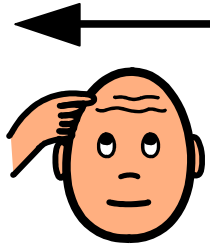
Cam



thought



and

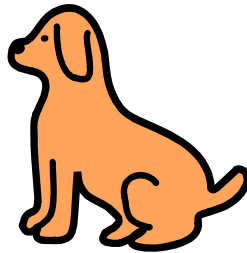


thought.

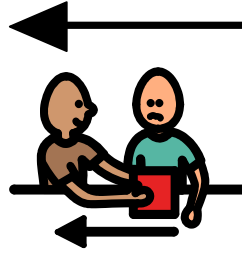


Maybe

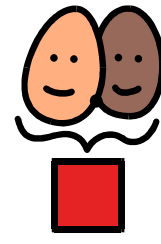
the



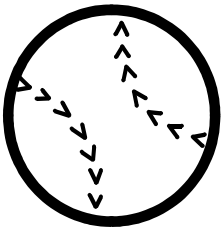
dog



took

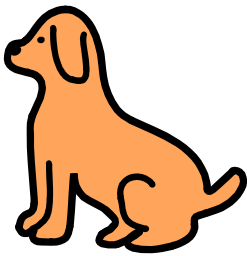


our



baseball.

Chapter 5

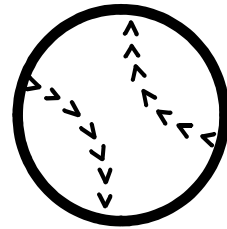


Dog

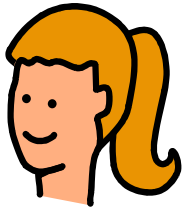


has

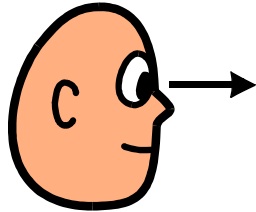
the



baseball

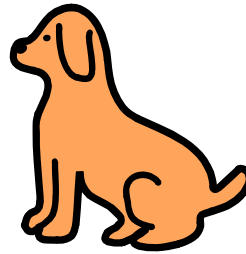


Cam



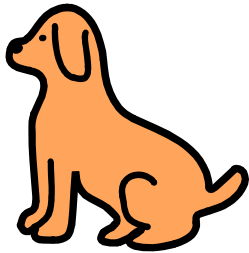
sees

the



dog.

The

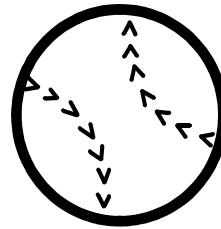


dog

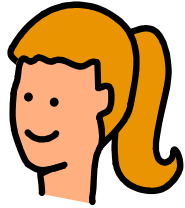


has

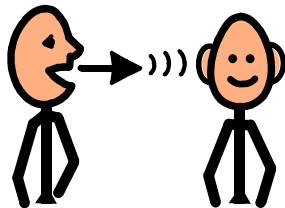
the



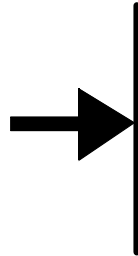
baseball!



Cam



talks

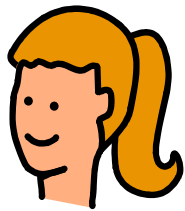


to

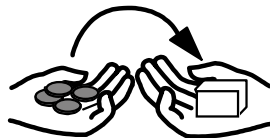
the



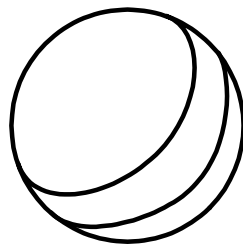
old man.



Cam



trades

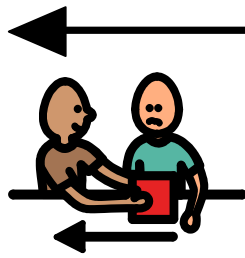


balls.





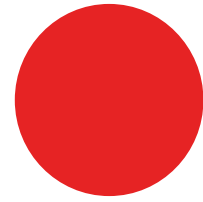
The old man



took



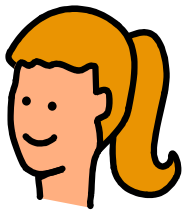
the



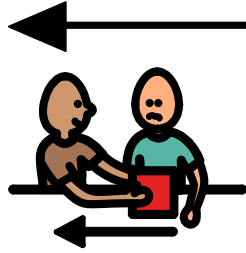
red



ball.



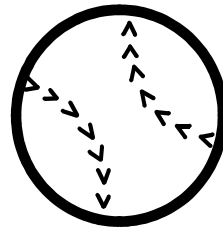
Cam



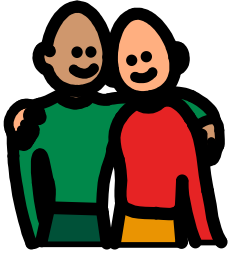
took



the

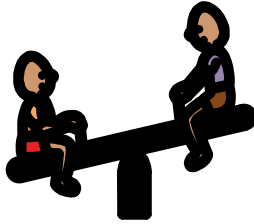


baseball.

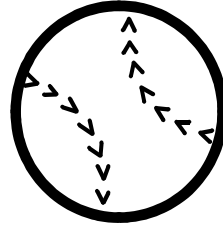


The

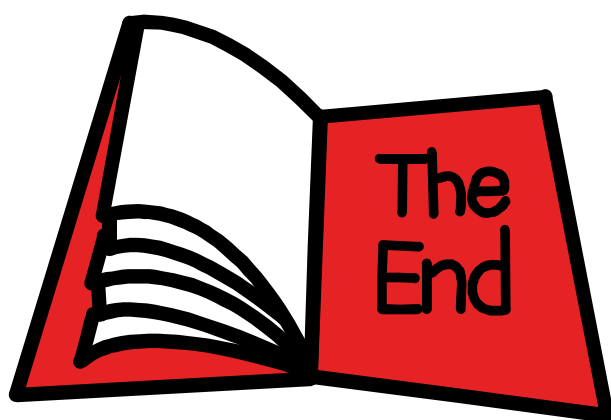
friends



play



baseball



The End

Disclaimer

This Adapted Literature resource is available through the Sherlock Center Resource Library. The text and graphics are adapted from the original source. These resources are provided for teachers to help students with severe disabilities participate in the general curriculum. Please limit the use and distribution of these materials accordingly.

Paul V. Sherlock Center on Disabilities / RI College
600 Mt. Pleasant Avenue, Providence RI 02908
www.sherlockcenter.org