

# Clap Your Hands



Lorinda Bryan Cauley



Clap



your



hands,



stomp



your



feet.



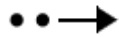
Shake



your



arms,



then



take



a



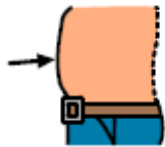
seat.



Rub



your



tummy,



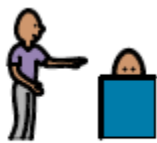
pat



your



head.



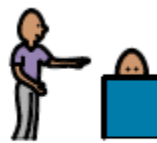
Find



something



yellow,



find



something



red.



Reach for the sky, wiggle your toes.



Stick out



your



tongue



and



touch



your



nose.



Roar like

**a**



lion,



growl like

**a**



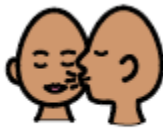
bear.





Give me

a



kiss,

do



you

dare?



Wiggle



your



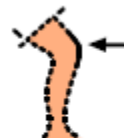
fingers,



slap



your



knee.



I'll tickle you if you tickle me!





Spin



in

a



circle,

try



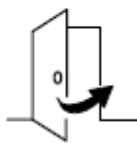
not



to



fall.



Close



your



eyes



and



count



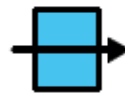
to



four.



**a**



Now do

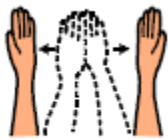
a

somersault

across

the

floor.



Spread



your



feet,



look



upside down.





Make

**a**

a



silly



face

**&**

and



act like

**a**

a



clown.



Hop like

**a**



bunny, flap like

**a**



bird.

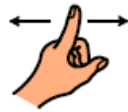


Quiet as

**a**



mouse, now



don't



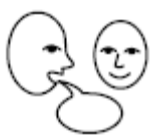
say

**a**



a

word.



Tell



me



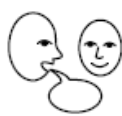
your name. How old



are



you?



Tell



me

**a**



secret,

**&**

and



I'll

tell



you

**1**

one.



Purr like

**a**



kitten,



bark like

**a**



dog.



Crawl like

**a**



baby,



jump like

**a**



a frog.



Count



your



fingers,



count



your



toes.





Wiggle



your



eyebrows,



wiggle



your



nose.



Show me

**a**

a



smile,



show me

**a**

a



frown.



Stand



on



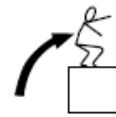
one



foot



and



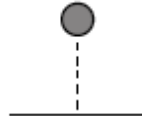
jump up



and







down.



Fly like an airplane high in the sky.



     
It's time to go now, so wave bye-bye.



Bye-bye.

## **Disclaimer**

This Adapted Literature resource is available through the Sherlock Center Resource Library. The text and graphics are adapted from the original source. These resources are provided for teachers to help students with severe disabilities participate in the general curriculum. Please limit the use and distribution of these materials accordingly.

**Paul V. Sherlock Center on Disabilities / RI College**  
600 Mt. Pleasant Avenue, Providence RI 02908  
[www.sherlockcenter.org](http://www.sherlockcenter.org)