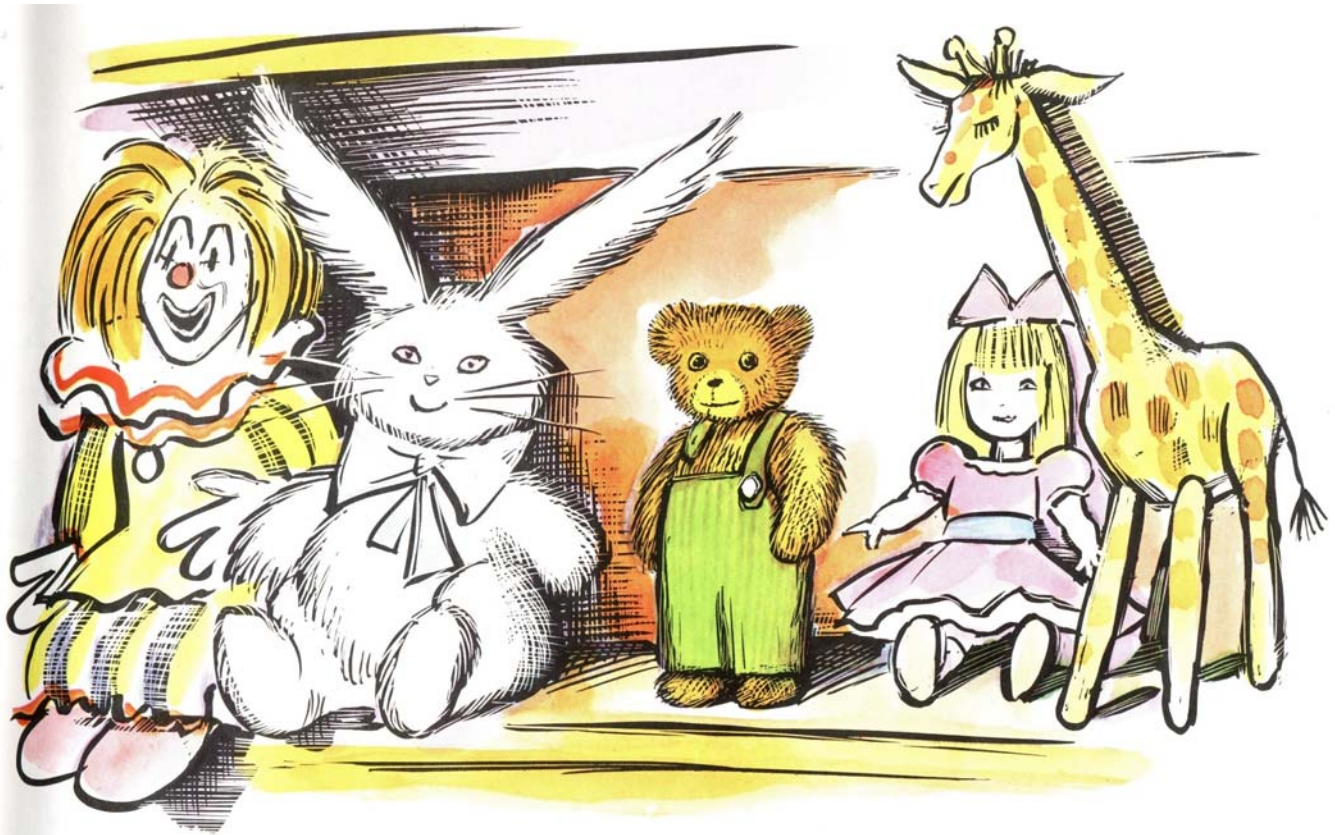


CORDUROY







Corduroy



lives



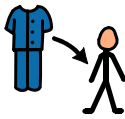
in



toystore.



Corduroy



wears



green



overalls.

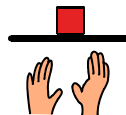


A girl visits the toystore.





A girl likes Corduroy.



The girl wants to buy Corduroy.





Mom



said

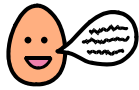


no





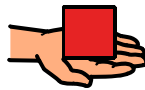
Mom



said



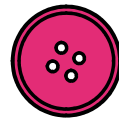
Corduroy



has

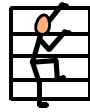


no



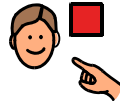
button.



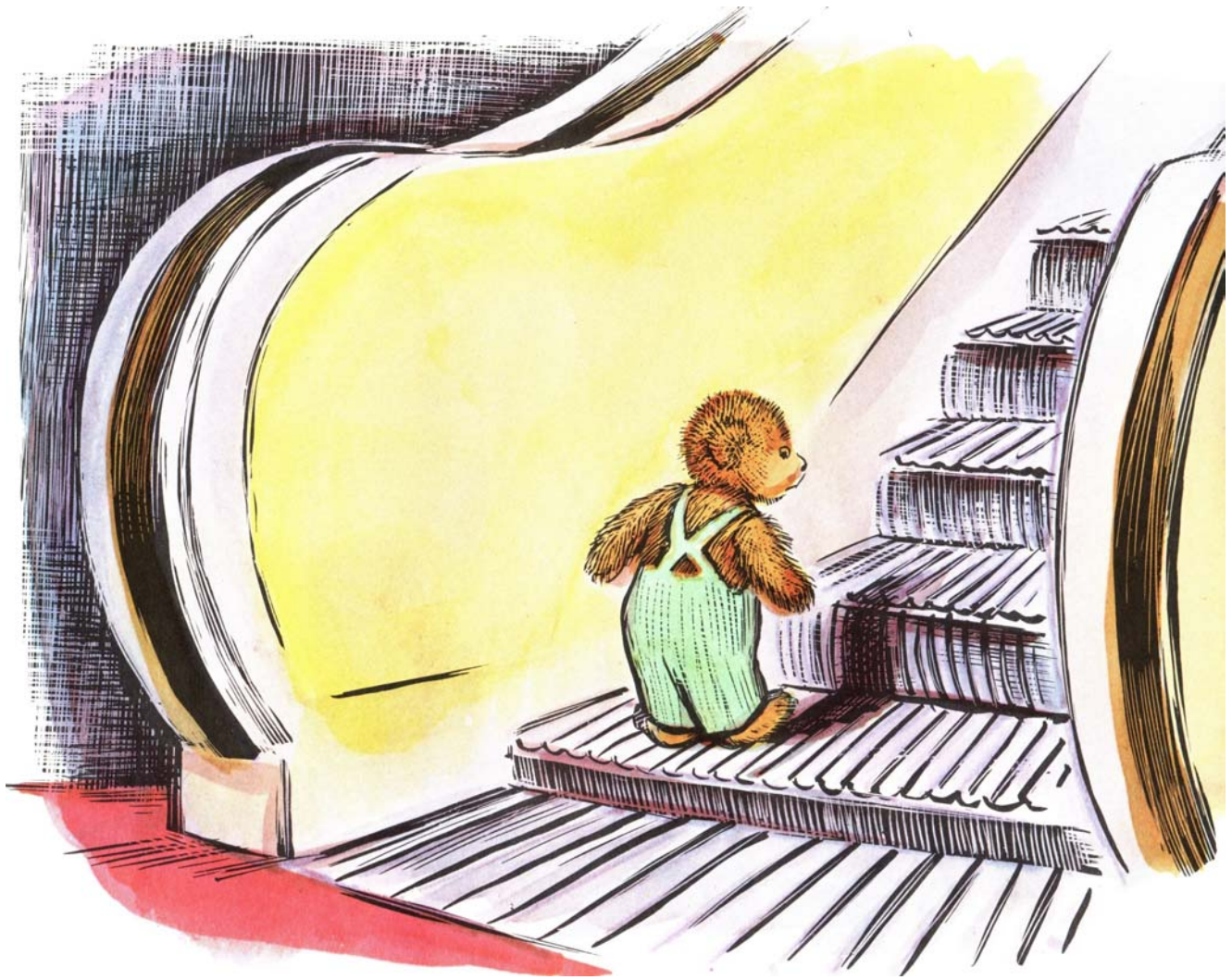


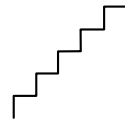
Corduroy climbed down.





Corduroy looked for his button.



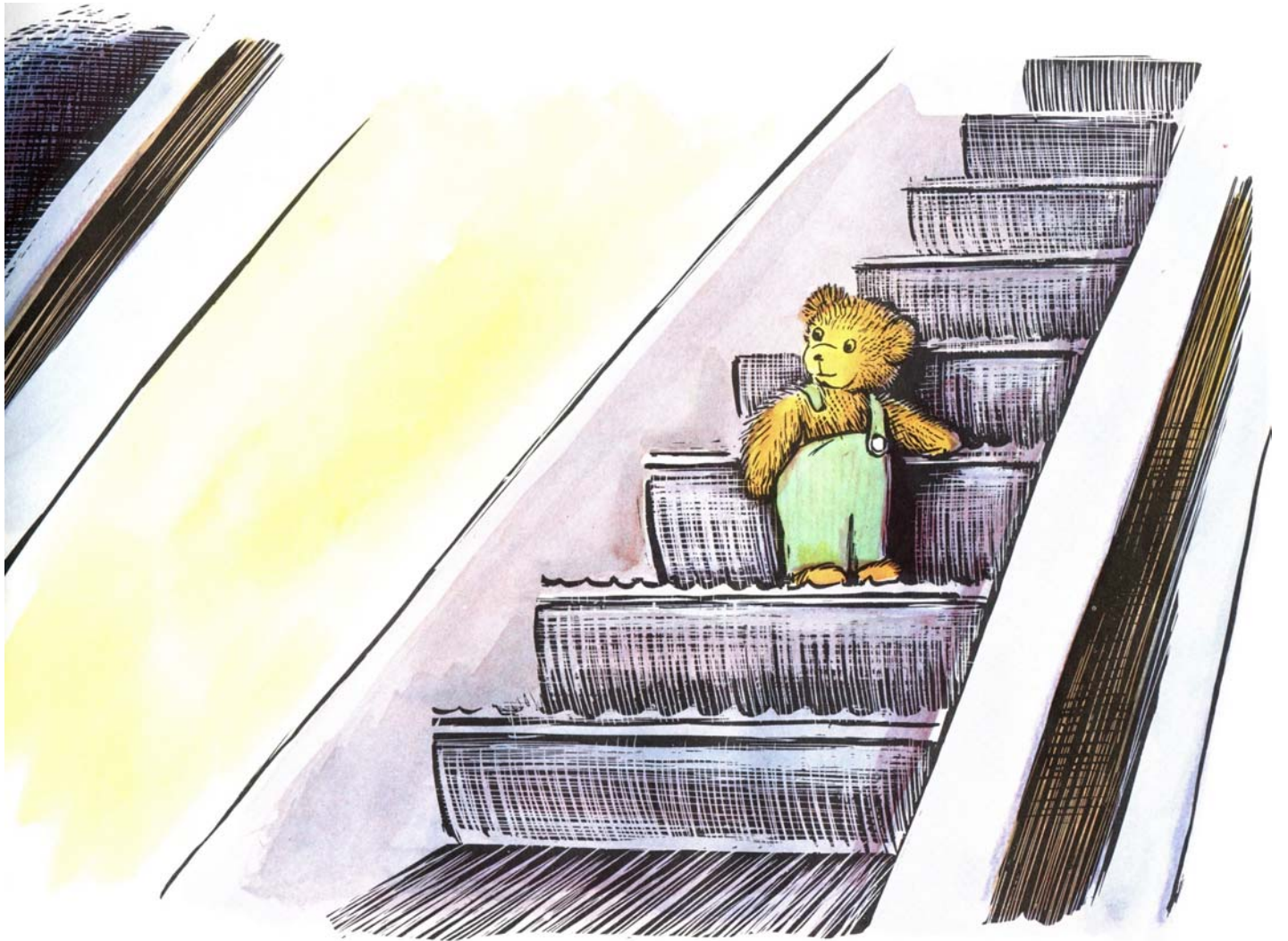


Corduroy stepped

on

the

stairs



The stairs went up!





Corduroy



saw



tables



and



chairs





Corduroy



saw



beds .





Corduroy



saw a



button



on

a



bed.



Corduroy



pulled

the



button.

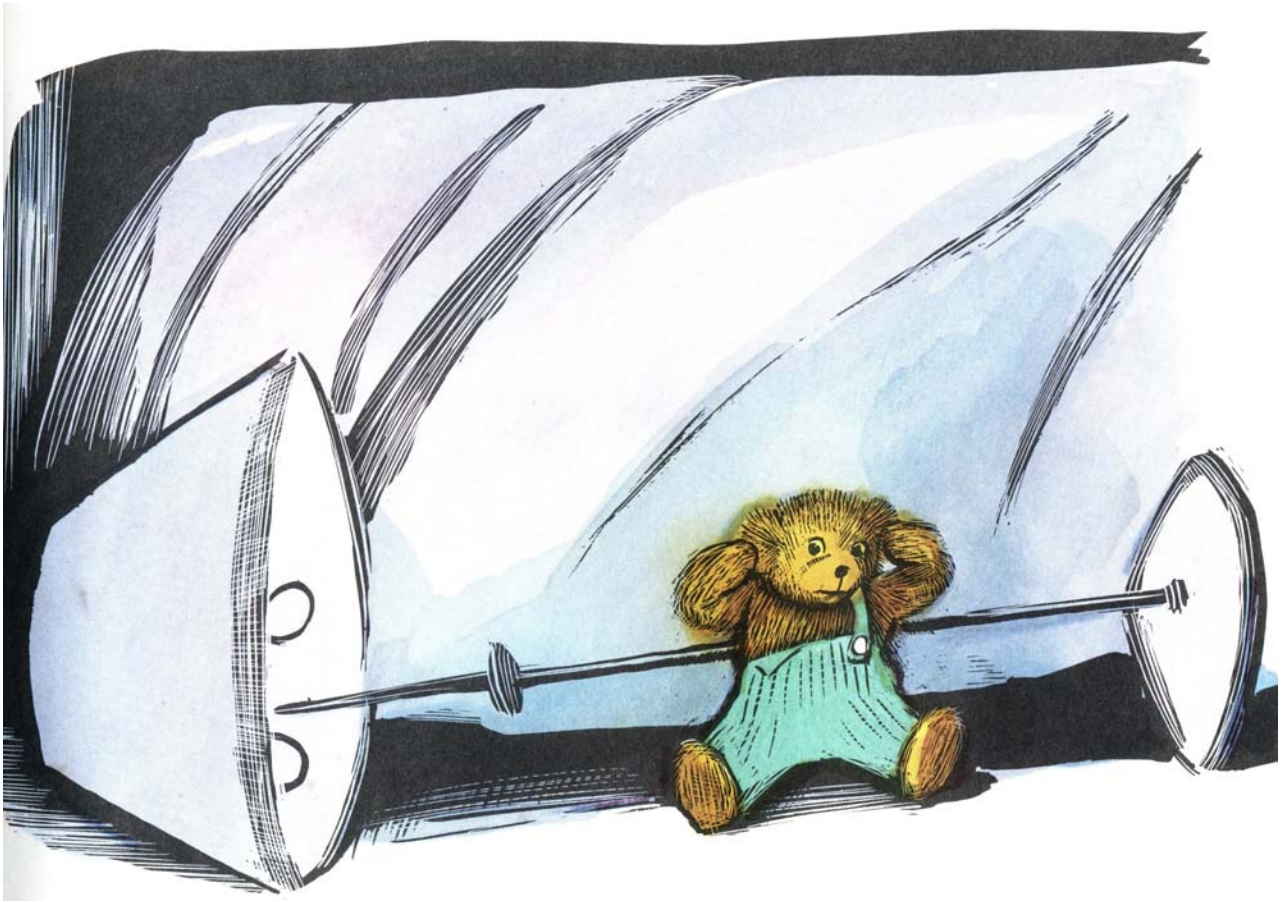


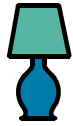


Corduroy

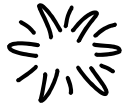


fell.





A lamp fell.

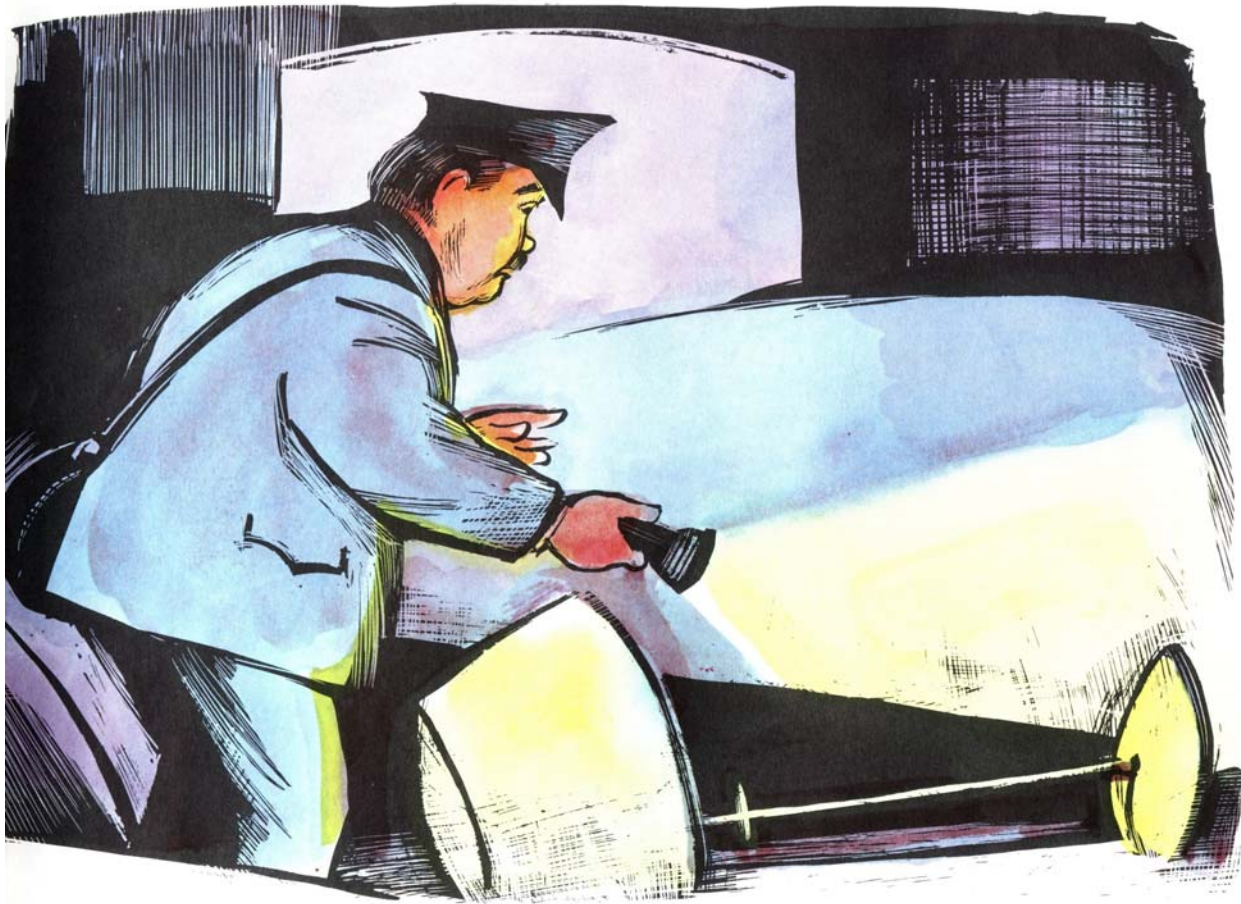


BANG!



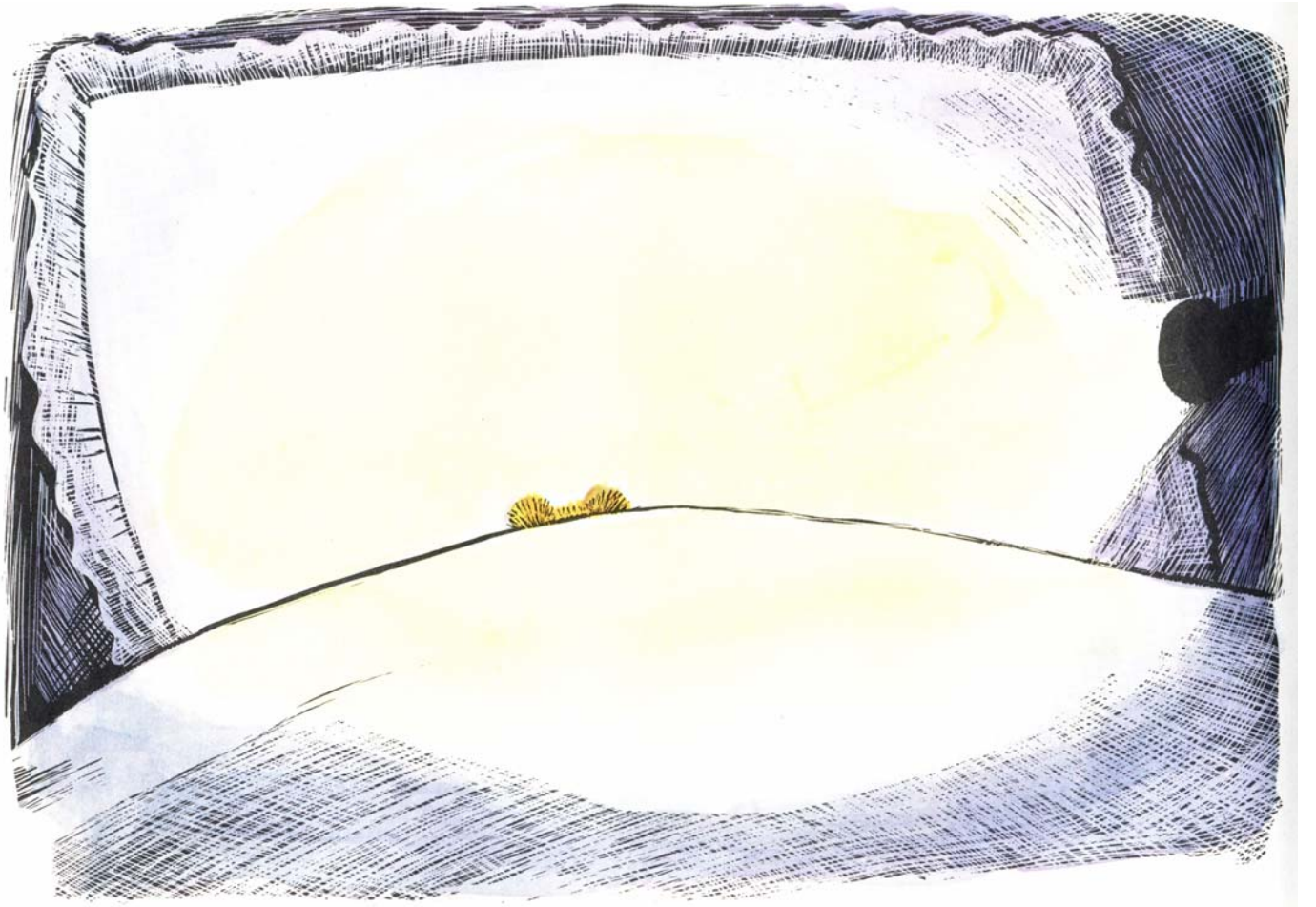


A policeman heard .





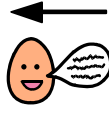
The policeman saw the lamp.





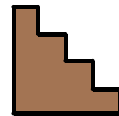
The policeman saw Corduroy.



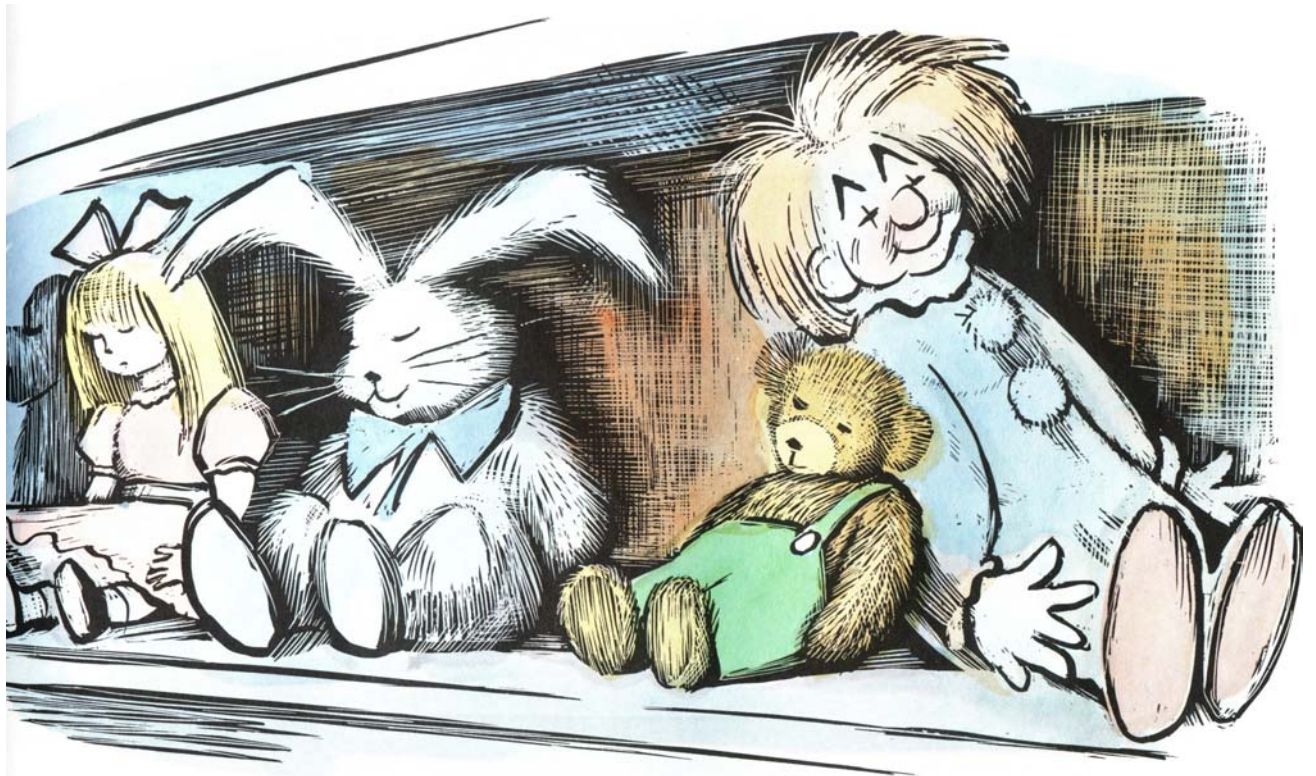


The policeman said Hello!



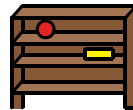


The policeman carried Corduroy down stairs.





The policeman sat Corduroy



on the shelf.





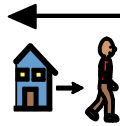
The girl saw Corduroy.



The girl bought Corduroy.







The girl left the store.





Corduroy

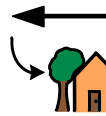


and

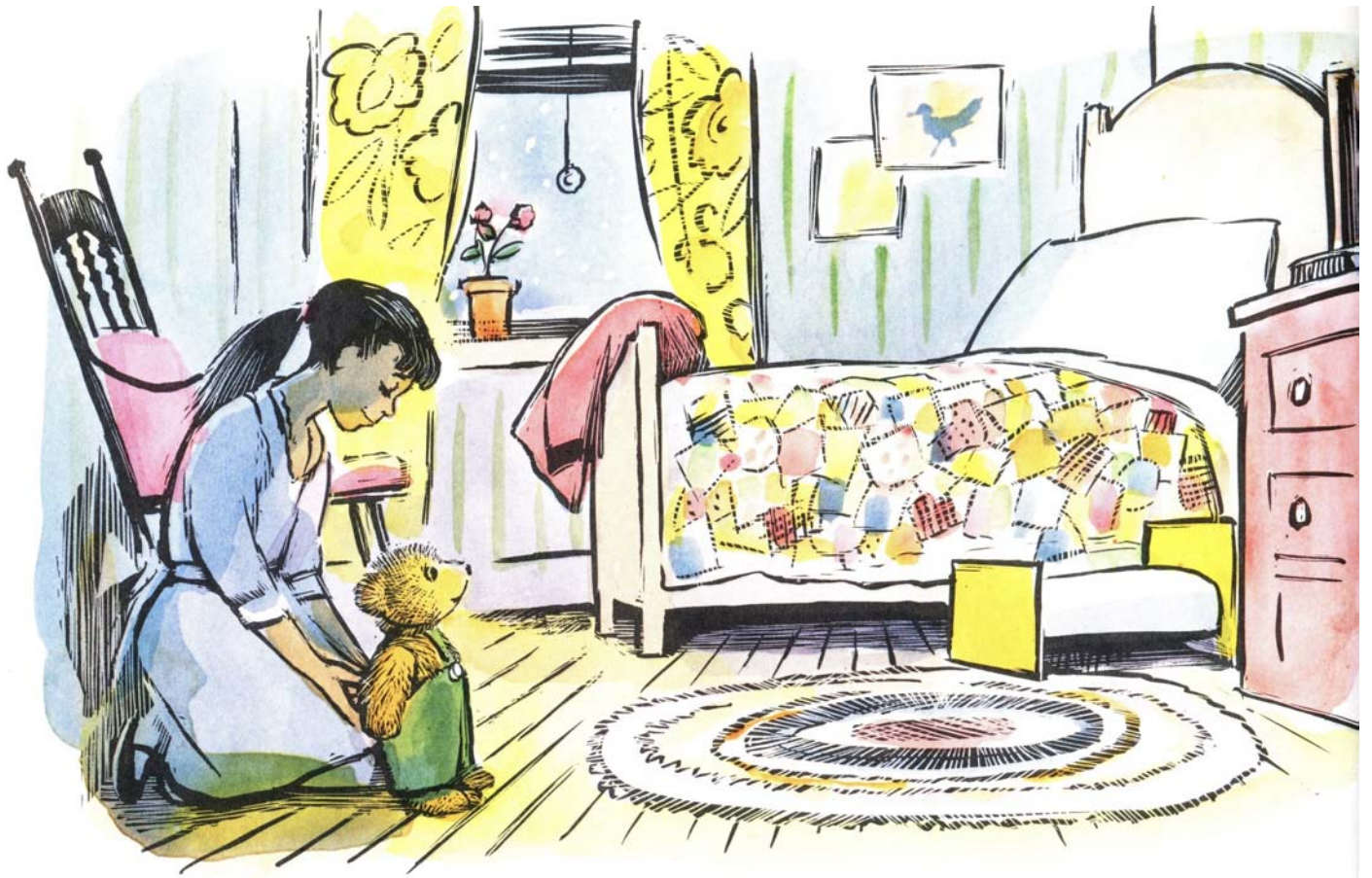
the



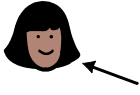





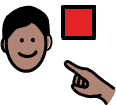

girl



went home



   
The girl saw her bed.

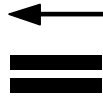
   
Corduroy saw his bed.



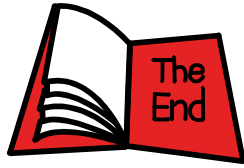
The girl sewed Corduroy's button.







Corduroy was happy.



The end

Disclaimer

This Adapted Literature resource is available through the Sherlock Center Resource Library. The text and graphics are adapted from the original source. These resources are provided for teachers to help students with severe disabilities participate in the general curriculum. Please limit the use and distribution of these materials accordingly.

Paul V. Sherlock Center on Disabilities / RI College
600 Mt. Pleasant Avenue, Providence RI 02908
www.sherlockcenter.org