

READY-TO-READ

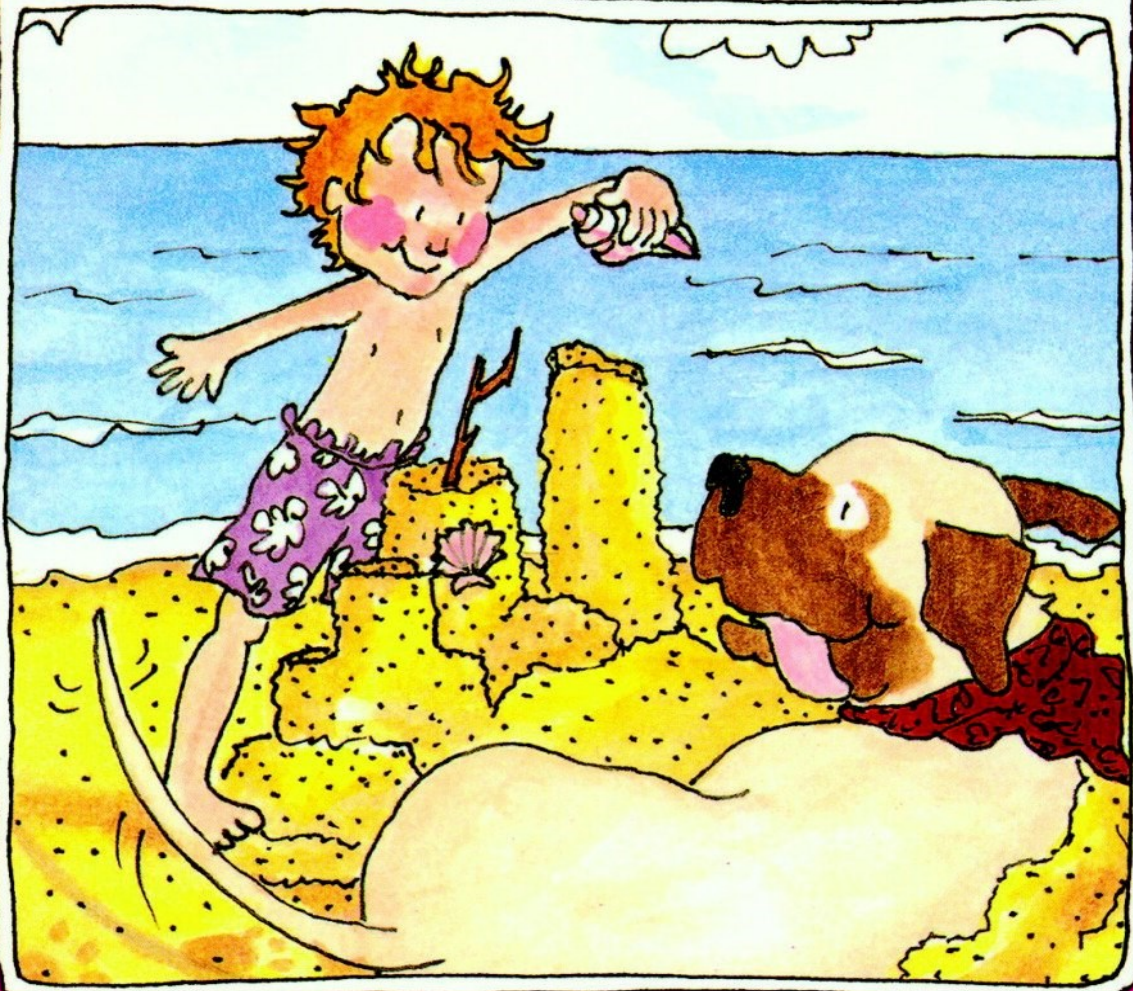
LEVEL
2

HENRY AND MUDGE

AND THE
Forever Sea



Story by Cynthia Rylant
Pictures by Suçie Stevenson





To the Beach



It is Summer. A boy named Henry and his dog



Mudge go in the car with Henry's dad to go to



the beach. Henry has a bag of toys for the



beach in the car. Mudge has a bowl, bone and



a ball. Dad brings a book, towels, and a toy



lobster. Henry and his dad sing songs in the



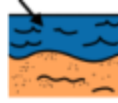
car. Henry and Mudge are happy to go to the



the beach.



Adapted from the original text, *Henry and Mudge and the Forever Sea*, by Cynthia Rylant.



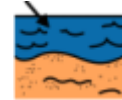
The Forever Sea



Henry looks at the ocean. It is blue and white.



Henry, Mudge and dad run to the sand. Henry,



Mudge and Henry's dad go in the ocean. The



ocean has big waves. Mudge did not love the



waves. Henry, Mudge and dad play at the beach.



Adapted from the original text, *Henry and Mudge and the Forever Sea*, by Cynthia Rylant.



Brave Dog



Henry, Mudge and dad eat hot dogs. Henry,



Mudge and dad build a sand castle. A toy lobster



was on top of the sand castle. A big wave made



the sand castle fall and the lobster goes in the



ocean. Mudge grabs the lobster. Henry, Mudge



and dad eat ice cream to celebrate.



Adapted from the original text, *Henry and Mudge and the Forever Sea*, by Cynthia Kiyant.



Good-bye Crab



Henry, Mudge and dad walk in the sand. Henry,



Mudge and dad see the sun go down. Henry,



Mudge and dad see the ocean. Mudge sees a



crab crawl out of the sand. The crab runs in to



the sand. Mudge looks for the crab. Henry,



Mudge and dad go home.



Adapted from the original text, *Henry and Mudge and the Forever Sea*, by Cynthia Rylant.

Disclaimer

This Adapted Literature resource is available through the Sherlock Center Resource Library. The text and graphics are adapted from the original source. These resources are provided for teachers to help students with severe disabilities participate in the general curriculum. Please limit the use and distribution of these materials accordingly.

Paul V. Sherlock Center on Disabilities / RI College
600 Mt. Pleasant Avenue, Providence RI 02908
www.sherlockcenter.org