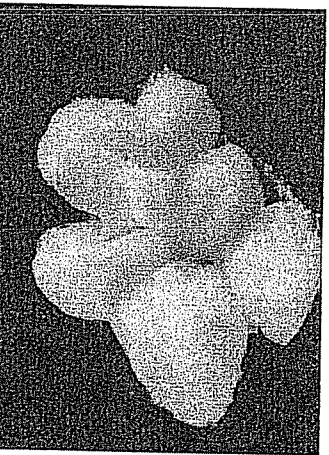
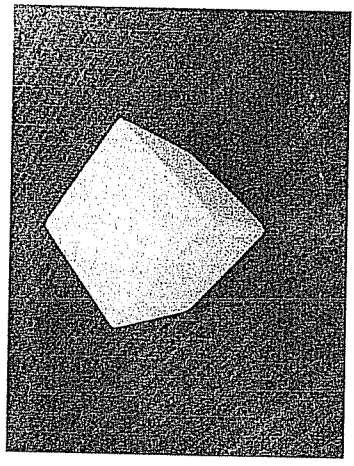


W  
C  
U  
O  
A  
I

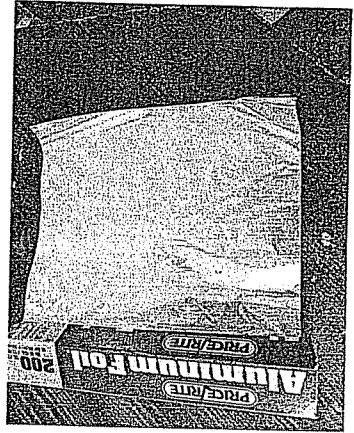


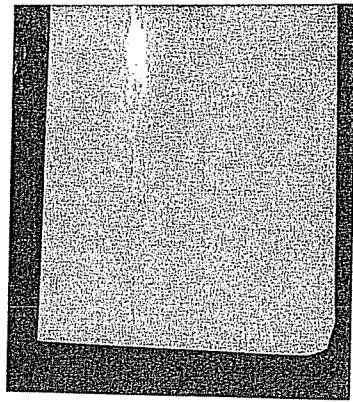
SOFT



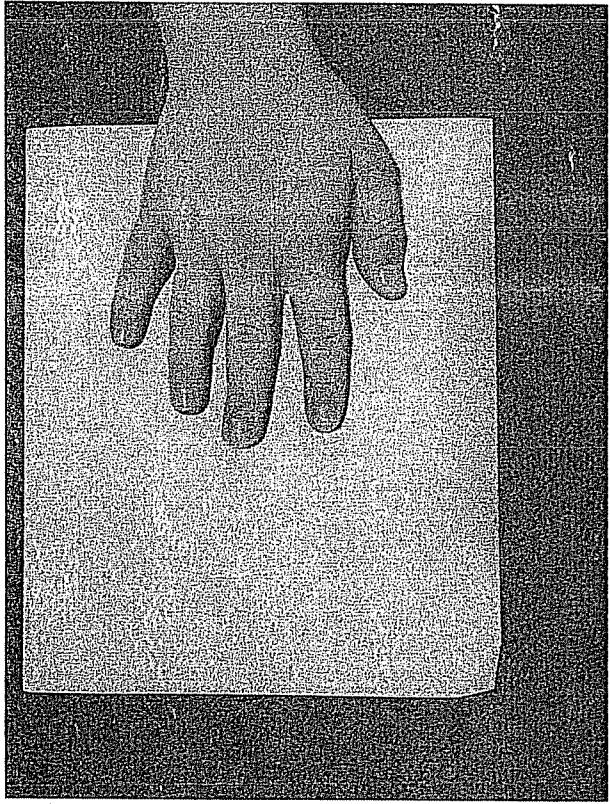
HARD



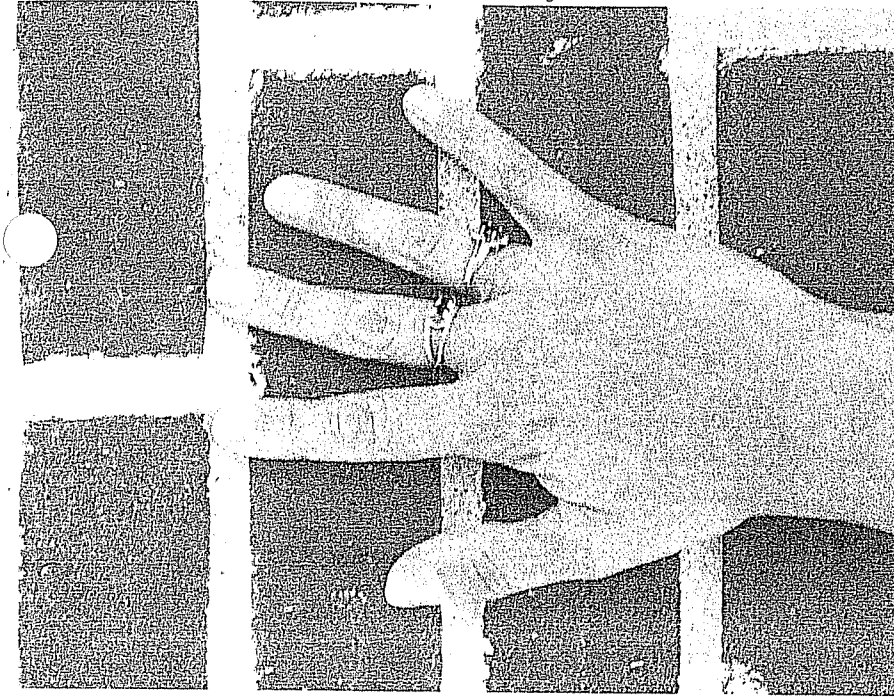
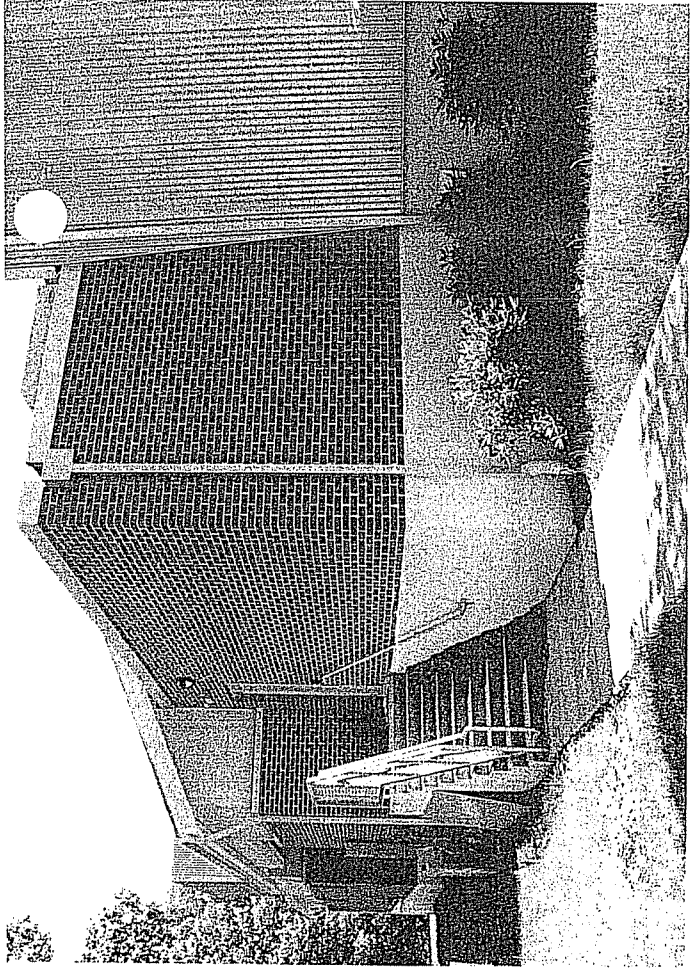
SMOOTH



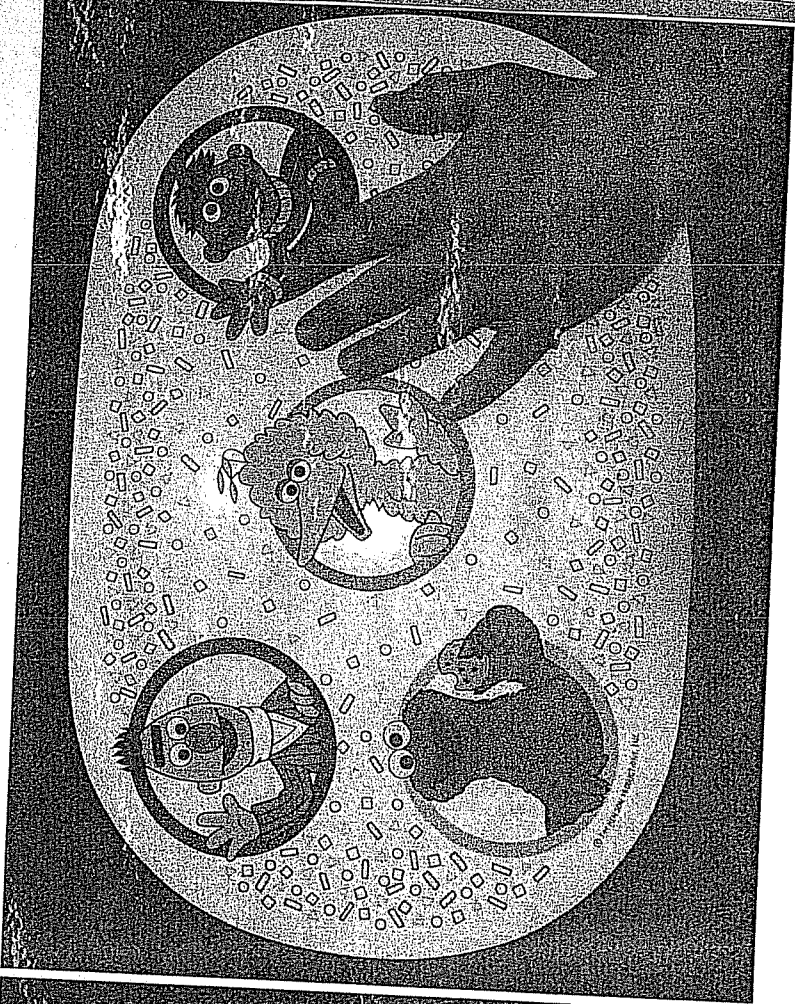
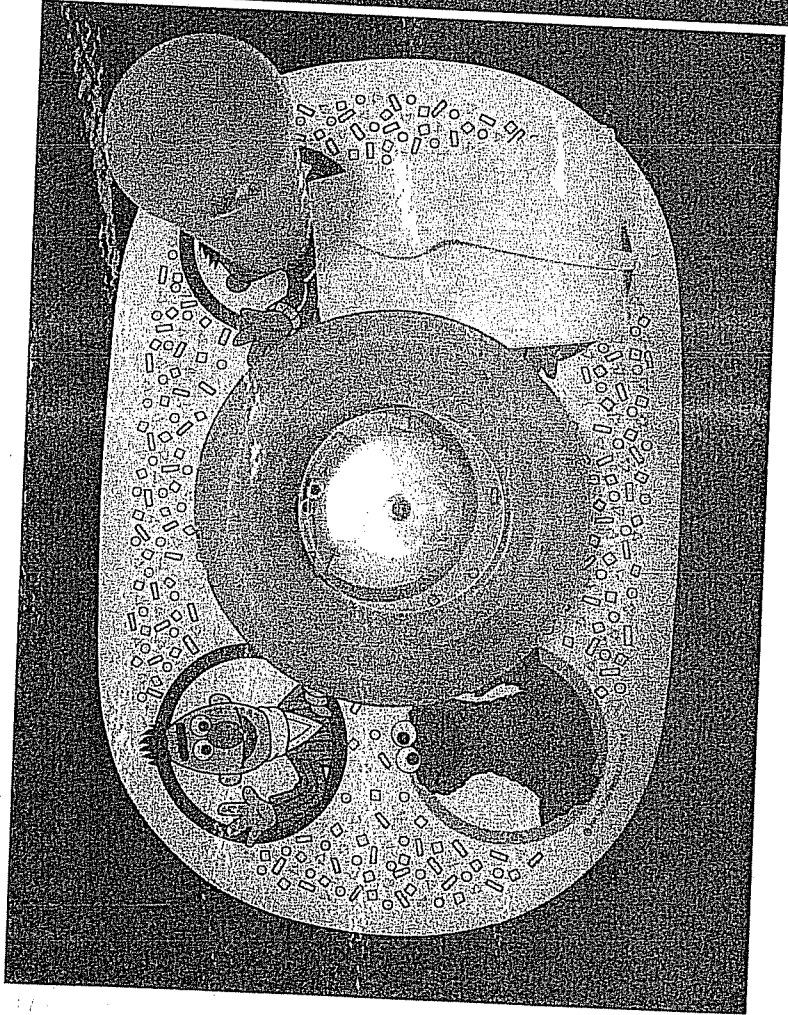
ROUGH



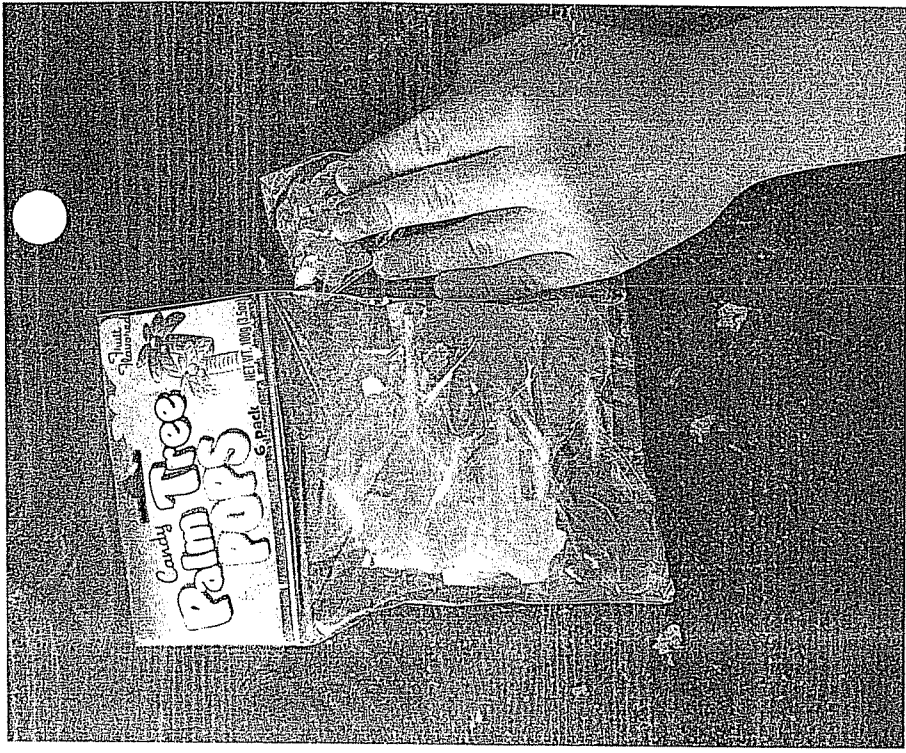
We use our hands to explore objects. Objects can feel rough, smooth, hard or soft.



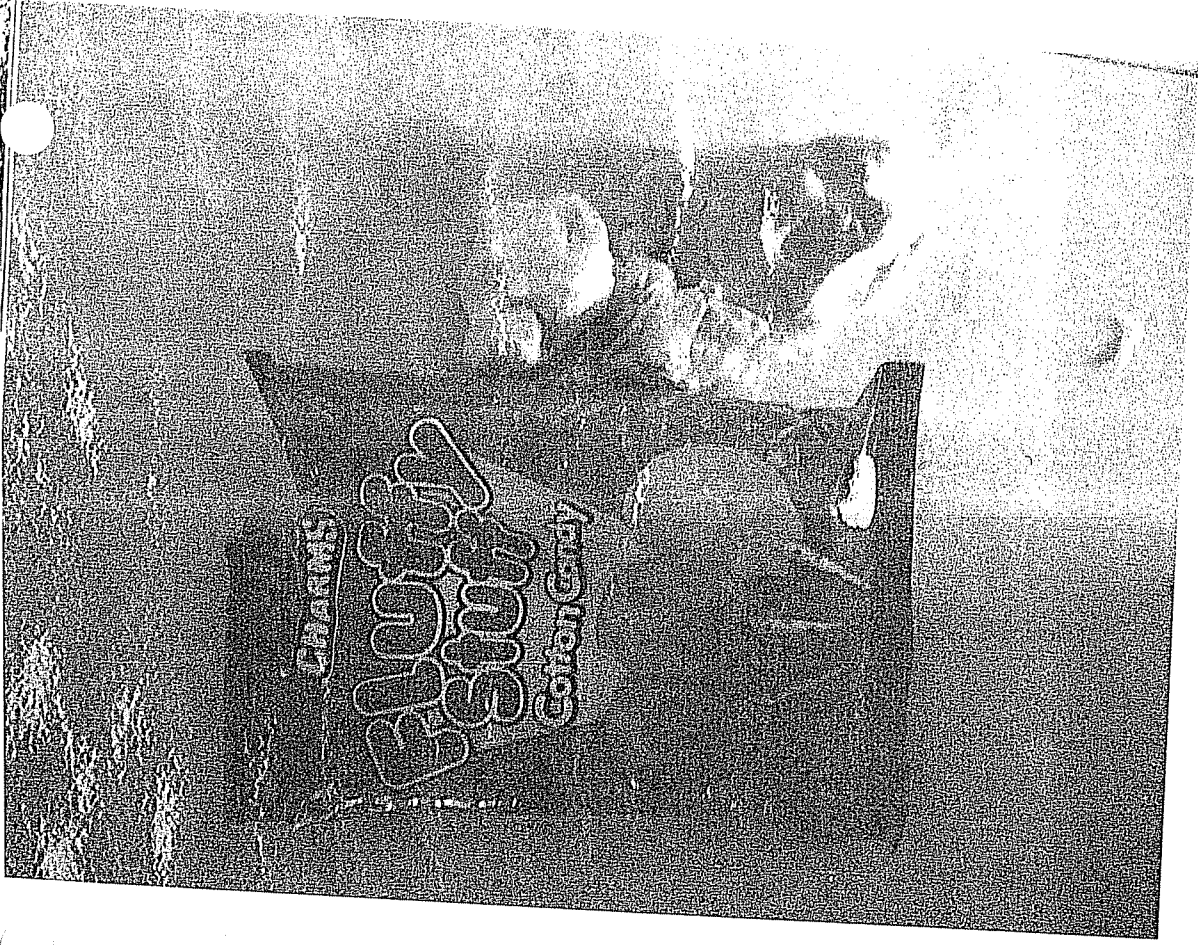
I touch the brick wall. It feels rough



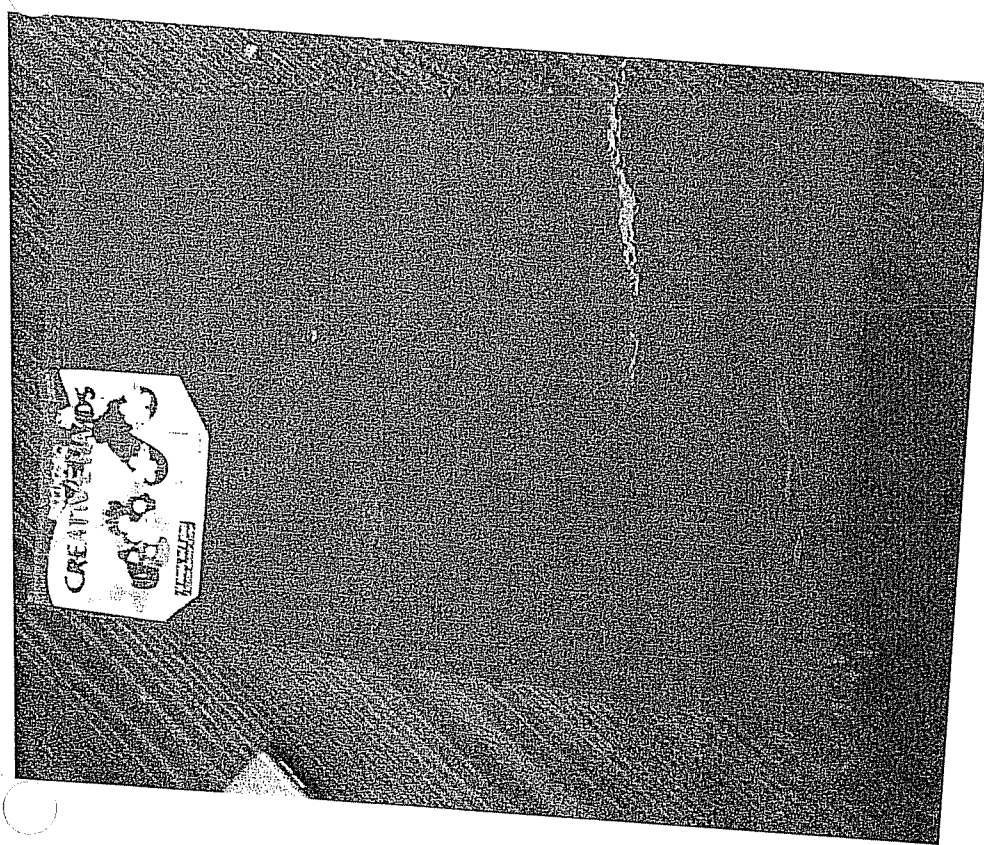
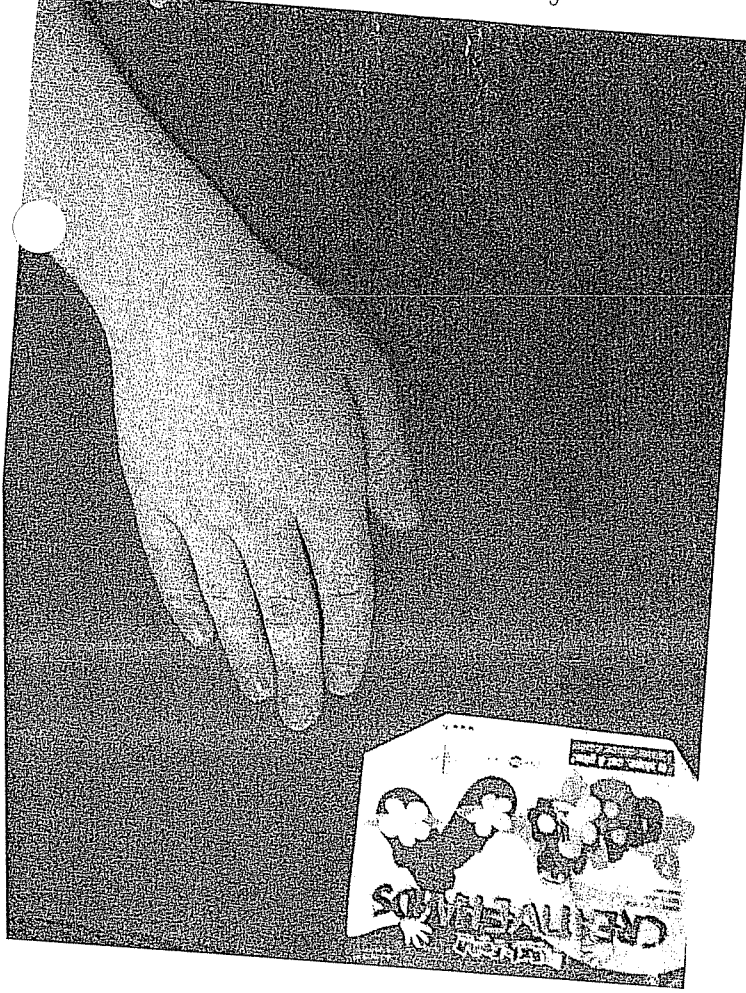
I touch the placemat. It feels smooth.



I touch the candy. It feels hard.



I touch the cotton candy. It feels soft.



I touch the foam sheet. It feels smooth.





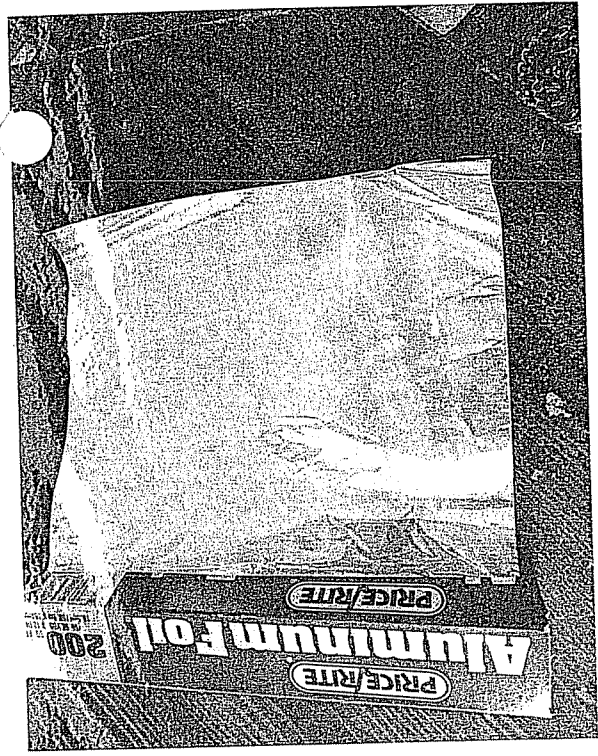
I touch the tree bark. It feels rough.



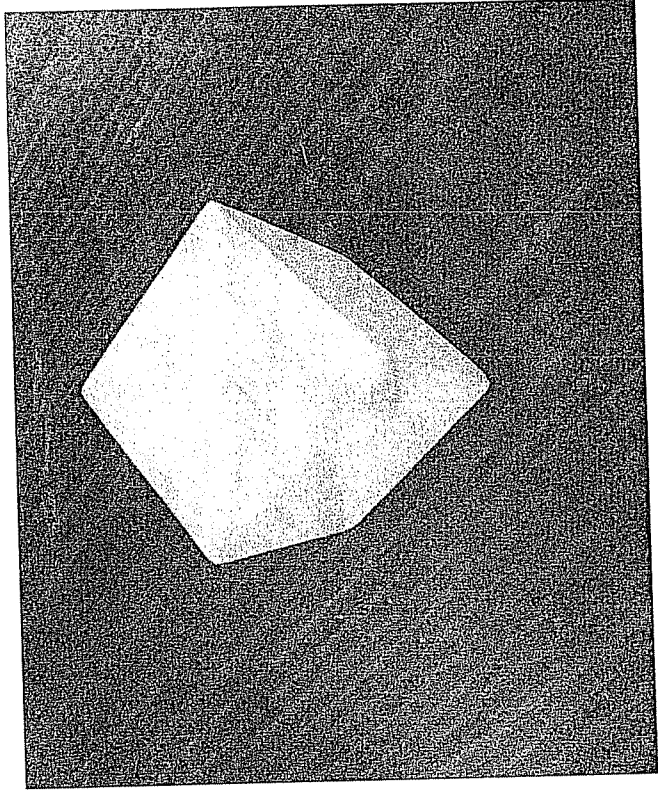
I touched the rock. It feels hard.



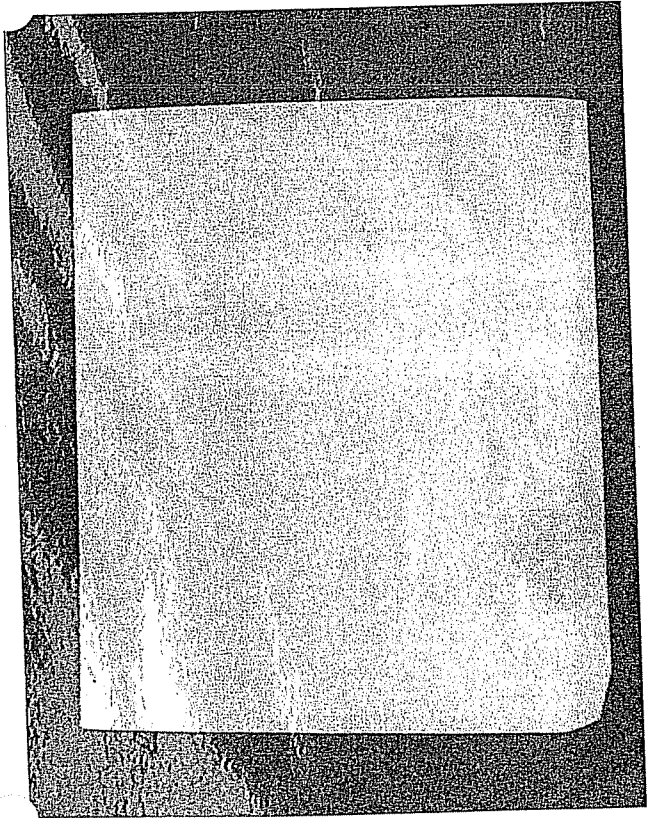
I touched the stuffed animals. It feels soft.



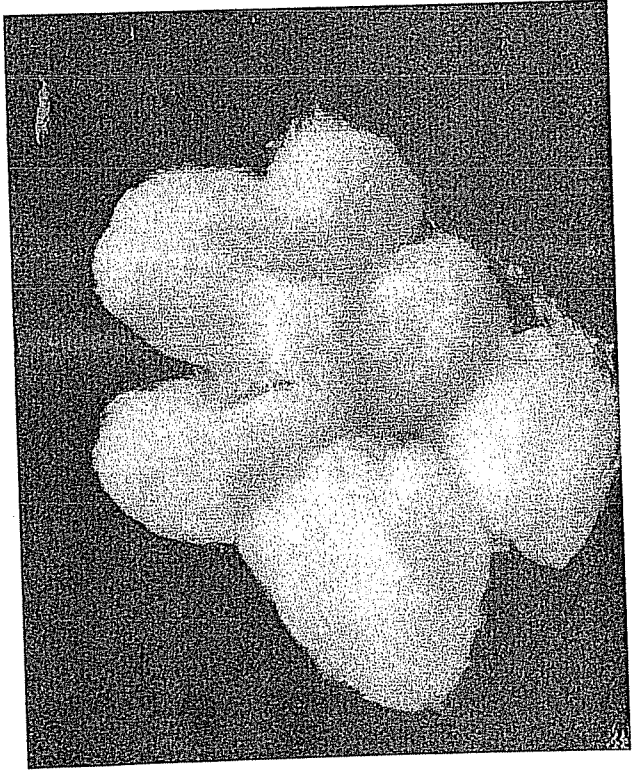
SMOOTH



HARD



ROUGH



SOFT